



A3+ size | XPJ-461UF

A2+ size | XPJ-661UF

**MUTOH**  
MAKES IT POSSIBLE

# XpertJet

## 461UF / 661UF

### Specifications

XpertJet		XPJ-461UF	XPJ-661UF
Printing system		On-demand piezo drive system	
Set media	Size (WxD)	483mm (19") x 329mm (12.95")	483mm (19") x 594mm (23.4")
	Height	up to 70mm (2.75") [with standard table] / up to 150mm (5.9") [without standard table] up to 70mm (2.75") [with optional vacuum table]	0 ~ 150mm (5.9")
	Weight	up to 5kg (11lbs) [with standard table] / up to 8kg (17.6lbs) [without standard table] up to 4kg (8.8lbs) [with optional vacuum table]	6kg (13.2lbs)
Max printable size (WxD)		483mm (19") x 329mm (12.95")	483mm (19") x 594mm (23.4")
Table height adjustment		PG handle (handle 1.5mm / round)	Automatic
Ink	Type	UV LED ink (UH21 ink / US11 ink)	
	Ink set	4 colours (K, C, M, Y) / 6 colours (K,C,M,Y, white, varnish)	
	Capacity	220ml ink cartridge (K,C,M,Y, white, varnish)	
	No. of slot	6	
Print resolution		1440/1080/720dpi (Total 3 modes)	
Interface		Ethernet (10BASE-T / 100BASE-TX)	
Power requirements		AC100-120V±10%, 50/60Hz±1Hz	
Operation noise		Standby: 51dB or less / Printing with standard table: 63dB or less / Printing with optional vacuum table: 70dB or less	Standby: 49dB or less / Printing with vacuum table: 69dB or less
Printable environment		Temperature: 20-32°C Humidity: 40-60%RH (non condensing)	
Electrical power consumption		Sleep mode: 20W or less / Ready to print: 40W or less / Operation: 195W or less	Sleep mode: 20W or less / Ready to print: 40W or less / Operation: 300W or less
Dimensions (WxDxH) / Weight		1,188mm (46.8") x 972mm (38.2") x 597mm (23.5") [Front cover closed] / weight: 95kg (209lbs)	1,188mm (46.8") x 1,627mm (64.1") x 604mm (23.8") [Front cover closed] / weight: 130kg (287lbs)
		1,188mm (46.8") x 972mm (38.2") x 1,011mm (39.8") [Front cover opened]	1,188mm (46.8") x 1,627mm (64.1") x 1,196mm (47.01") [Front cover opened]
		1,188mm (46.8") x 1,025mm (40.4") x 597mm (23.5") [PG handle cover opened]	
Printer Driver		Bundled	
RIP software		VerteLith	
Rotary Jig		N/A	Optional
Stand		N/A	Included

\* The vacuum table is optional for XPJ-461UF.  
 \* Specifications are subject to change without notice.  
 \* The printer driver is included in the XPJ-461UF / 661UF.  
 \* Ink adhesion will vary among media type and brand. Individual testing is required in function of your specific application.  
 \* As white ink settles at the bottom of cartridge, please be sure to shake lightly once a day before use.



**MUTOH**

Mutoh Australia Pty Ltd  
 Unit 19 / 76 Reserve Road, Artarmon NSW 2064  
 ph: 02 9437 1366 e: sales@mutoh-au.com  
 web: www.mutoh-au.com

Distributed by:

# Everything you want in a simple and compact desktop UV LED printer

## XpertJet 461UF

**A3+**  
Print size  
Max.483mm x 329mm

**MAX 150mm**  
Media thickness  
Max.150mm

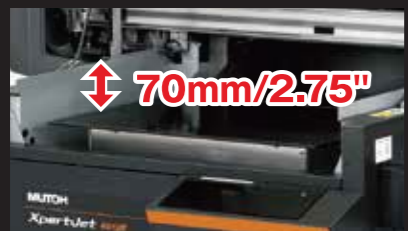
CMYK  
CMYK White, Varnish

Rigid & Flexible type



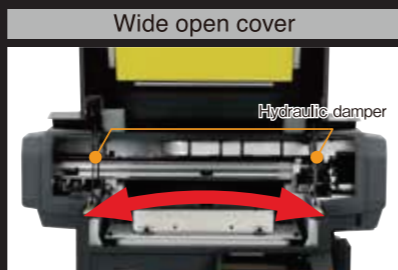
### Small footprint smart design model XPJ-461UF

Table mechanism for various objects



**70mm/2.75"**

Wide open cover



Hydraulic damper

Print objects up to 70mm/2.75" thick easily using manual adjustment knob

Removed the table enables printing objects up to 150mm/ 5.90" thick.  
\*Original jig production is recommended

Expanded open space allows for easy access to position the substrates and maintenance.

## XpertJet 661UF

**A2+**  
Print size  
Max.483mm x 594mm

**MAX 150mm**  
Media thickness  
0~150mm


CMYK  
CMYK White, Varnish

Rigid & Flexible type



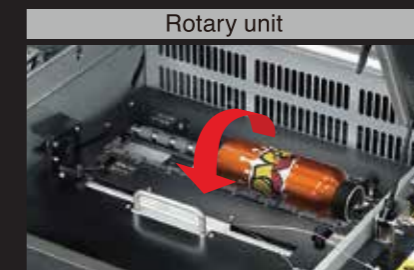
### High performance model with enhanced productivity XPJ-661UF

Automatic table lifting




**0-150mm/5.9"**

Rotary unit



Original stand



Working height  
1,222mm/48.1"

Automatic table lifting enables high-precision height adjustment and stabilizes printing quality.

The ability of 360° printing onto cylindrical objects expands range of your applications. (optional)

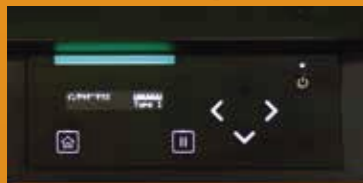
Optimal height for operation with rollaway stand.

### Braille



Print tactile 2.5D graphics such as embossed text, braille, and textured decorations. XPJ-661UF is ideal for premium 2.5D printing grater than 1mm thick (XPJ-461UF needs manual adjustment)

### LED touch panel



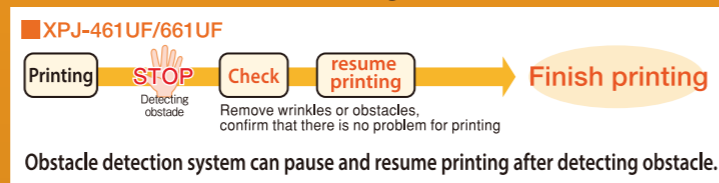
Beautifully designed, intuitive, high visibility electrostatic touch panel for easy to use operation. Supports 8 languages

### Vacuum table holding media firm



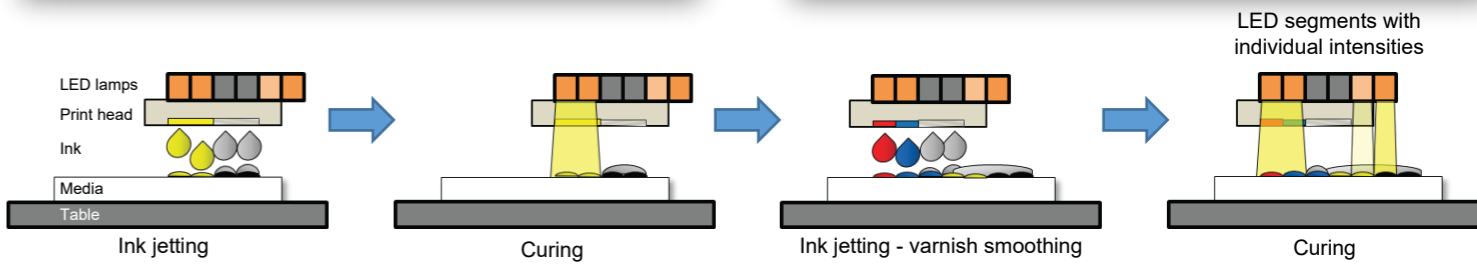
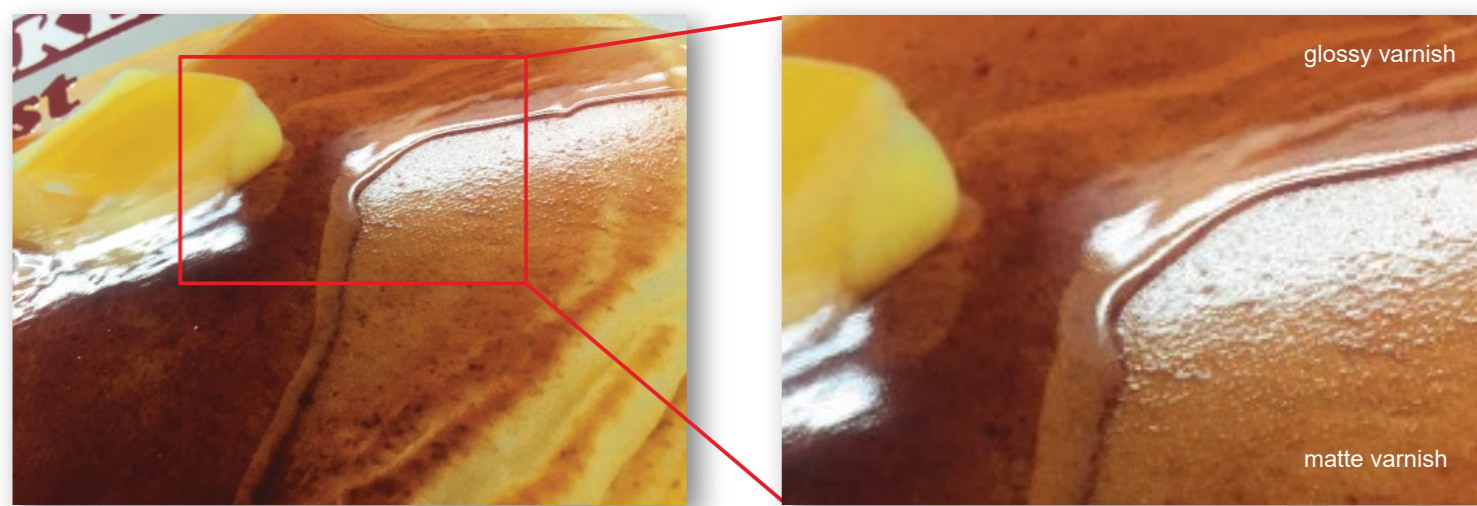
Vacuum table can hold thin media firmly. Control 5 steps of vacuum power directly from the operation panel. (Optional for the XPJ-461UF)

### Obstacle detection system



### Local Dimming Control (Patent pending)

The XPJ-461UF /661UF are equipped with a newly developed segmented 50mm wide UV lamp. The UV lamp has 6 different sections. Each lamp section can be individually controlled, enabling production of multiple varnish effects in the same print table movement. Gloss, semi-gloss and matte varnish effects can be produced in one table movement for prints combining CMYK + Varnish or White + Varnish. The result is a substantial productivity boost as well as a minimised risk of dust contamination in the glossy printed area.



Novelty gifts

Accessories

Art prints

Promotional products

Occasional gifts

Awards

ID badges

Packaging proofs